

MICHIGAN

WELDING CO.

180A MULTI PROCESS WELDER

DC Inverter with Colour LCD Display and Synergic Auto Set



..172846 MULTI180LCD

- UP TO 1.0 mm SOLID WIRE
- UP TO 3.2 mm ELECTRODES
- WELDS UP TO 6 mm
- 10A
- 12 kVA GENERATOR
- WEIGHT 13 kg

FEATURES

- ▶ Stepless voltage and wire feed control
- ▶ Synergic Auto Set function for MIG welding
- ▶ 4.3" Colour LCD display
- ▶ 2 Touch (2T) and 4 Touch (4T) MIG trigger function
- ▶ Spool gun capable
- ▶ Adjustable wire speed run in time, burn back, spot time and inductance in MIG mode
- ▶ Suits 1kg and 5kg wire spools
- ▶ Fan cooled
- ▶ IGBT Inverter technology
- ▶ 3 Year limited warranty

SPECIFICATIONS

- ▶ Input voltage: 220-240V~ 50/60Hz
- ▶ Plug & cable: 10A, 3G2.5mm² Core (2.0m L)
- ▶ I_{eff} (input effective amps): 9.2A (MIG), 8.6A (STICK), 8.2A (TIG)
- ▶ I_{max} (max effective amps): 29A (MIG), 27A (STICK), 18.3A (TIG)
- ▶ MIG function output amp range: 30-180A
- ▶ MIG duty cycle at 40°C -10% @ 180A
- ▶ STICK (MMA) function output range: 10-160A
- ▶ STICK (MMA) duty cycle at 40°C -10% @ 160A
- ▶ TIG function output: 10-160A
- ▶ TIG duty cycle at 40°C -20% @ 160A
- ▶ Power source weight: 13.2kg
- ▶ Recommended generator size: 12kVA
- ▶ Suits 0.6 - 1.0mmØ solid MIG wire
- ▶ Suits 0.8-1.0mm flux core wire
- ▶ Maximum size GP electrode: 3.2mmØ
- ▶ IP Rating: IP21S
- ▶ Compliant to AS60974.1
- ▶ Dimensions: (LxWxH) 601x401x450mm

PACKAGE CONTENTS

- ▶ 180A Multi Process Welder
- ▶ 3m MIG Torch with Euro Connector
- ▶ 3m Twist-lock electrode holder
- ▶ 3m Earth clamp
- ▶ 3m Gas hose
- ▶ Contact tips 0.8, 0.9 (installed)
- ▶ Gas Shroud (Installed)
- ▶ V Roller 0.8-0.9mm (Solid) (installed)
- ▶ Knurled Roller 0.8-0.9mm (Gasless)
- ▶ Large dinse 35-50
- ▶ 10A Plug & cable
- ▶ Argon flowmeter
- ▶ Operating manual

COMPATIBLE PRODUCTS

ACCESSORIES

- ..71185 200mm MIG Welding Pliers
- ..117568 4m 250A Earth Clamp 35-50 Dinse Plug
- ..117561 1.8m x 1.8m Leather Welding Blanket

Torch Stands

- ..126876 Magnetic MIG Torch Stand
- ..126877 Magnetic TIG Torch Stand

Regulators

- ..111586 Argon Regulator
- ..111633 Argon Flowmeter

Welding Table & Trolleys

- ..117566 Multi purpose Welding Table
- ..100179 Heavy Duty Welding Trolley
- ..111560 Heavy Duty Welding Trolley
- ..178718 Welding Trolley With Locking Cabinet

Welding Curtains & Frames

- ..123300 1.74m x 1.74m Red Welding Curtain
- ..138366 1.74m x 1.74m Green Welding Curtain
- ..123301 1.8m x 1.8m Welding Curtain Frame
- ..123302 1.8m Welding Curtain & Frame Kit

TORCHES

MIG

- ..111548 4m MB15 MIG Torch - Euro Connector
- ..138794 4m 150A MIG Spool Gun

TIG

- ..114704 4m 17V Lift TIG Torch - Large Dinse Plug

Electrode Holder

- ..117570 4m 250A Twist-lock 35-50 Dinse Plug

TORCH CONSUMABLES

MIG Contact Tips - MB15 torches

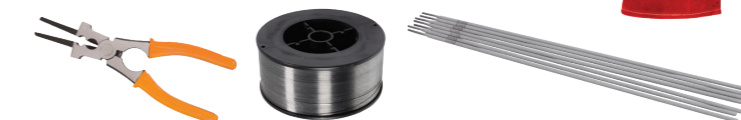
- ..111561 0.6mm - 10 Pack
- ..111562 0.8mm - 10 Pack
- ..111563 0.9mm - 10 Pack
- ..111564 1.0mm - 10 Pack

MIG Gas Shroud - MB15 torches

- ..111565 2 Pack

Torch Liner

- ..126878 4m Universal MIG Torch Liner



All products exclusive to Total Tools www.totaltools.com.au

COMPATIBLE FILLER METALS

E71T-11 Flux Cored Gasless Wire

- ..111574 0.8mm 0.9kg 100mm Spool
- ..111575 0.8mm 4.5kg 200mm Spool
- ..111576 0.9mm 0.9kg 100mm Spool
- ..111577 0.9mm 4.5kg 200mm Spool

ER70S-6 Mild Steel Wire

- ..111578 0.6mm 5kg 200mm Spool
- ..111579 0.8mm 5kg 200mm Spool
- ..111580 0.9mm 5kg 200mm Spool

E6103 GP Electrodes

- ..111570 2.5mm 2.5kg 350mm
- ..111571 2.5mm 5kg 300mm

PROTECTIVE EQUIPMENT

Auto Darkening Helmets

- ..154540 Flip Front Helmet
- ..140104 Helmet - Black
- ..140105 Helmet - Carbon Fibre
- ..174215 Helmet - Hazard
- ..116237 PAPR Helmet
- ..145663 Professional Helmet - Black
- ..145664 Professional Helmet - Blue
- ..140106 Professional Helmet - Blue Flame
- ..143294 Professional Helmet - Aussie Flag

Leather Welding Gloves

- ..159308 MIG Gloves - L
- ..159309 MIG Gloves - XL
- ..159310 TIG Gloves - L
- ..159311 TIG Gloves - XL
- ..159312 Heavy Duty Gloves - L

Welding Jackets

- ..128588 Jacket Orange - L
- ..126888 Jacket Orange - XL
- ..128589 Jacket Orange - XXL

